



## BC30 MC

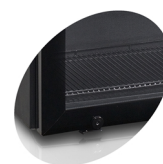
Milk Cooler

### Product features

- Ideal as milk cooler for coffee machines
- Table top cooler with holes, bushings and plugs
- 6 holes - 2 in the top, 2 on each side
- Hinged glass door
- Adjustable feet
- Fan assisted cooling
- LED interior light



6 pre-drilled valves for milk hoses



Lock

### Milk Cooler for Coffee Machines

It's an ideal partner for any coffee machines needing a supply of fresh and cooled milk. With 6 holes, closed bushings and plugs on both sides and on the top of the cabinet for maximum flexibility, you get very easy access to the milk, and a hassle free and convenient producing experience. The cooler is mounted with modern LED light and with adjustable feet.

Design and Material	
No. of Doors	1
Door No & Type	1 hinged self-closing glass door
Tempered glass	Yes
Door Reversible	No
No. of Shelves pcs	1
Shelves No & Type	1 wire shelves black
Shelf Color	Black
Shelf Dimensions	275 x 205 / 135 mm
Feet / Legs	4 adjustable feet
Exterior Finish	Black
Interior Finish	Coated aluminium, black
Interior Light	LED
Lock	Yes

Measures and Content		
Temperature Range	°C	+2 to +10
Climate Class		4
Gross / Net Weight	kg	25 / 23
Gross / Net Volume	l	22 / 20

Cooling and Functions		
Type of Controller		Mechanical
Type of Cooling		Fan assisted
Type of Defrost		Automatic
Refrigerant		R600a
Refrigerant Charge	g	20
Thermometer		No
GWP		3

Power and Consumption		
Energy Class		C
Energy Arrow		

Energy Consumption	kWh/24h	0,55
Annual Energy Consumption	kWh/year	200
EEl	%	24
EEl Vol	l	30
Input Power	W	60
Voltage / Frequency	V/Hz	220-240/50
Noise Level	db(A)	44

Dimensions		
Internal Dimension (WxDxH)	mm	280 x 271 x 380
External Dimension (WxDxH)	mm	356 x 406 x 491
Packed Dimension (WxDxH)	mm	400 x 450 x 520
40ft Container Load	pcs	580