

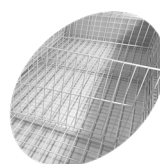
SHALLOW 250-F

Supermarket Freezer

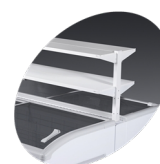


Product features

- Extra large panorama glass lids
- Can be arranged into islands
- Perfect display for frozen foods
- Low energy consumption
- Save on total expenses (operation plus investment costs)
- Automatic defrost
- 2 cooling systems for redundancy
- Ticket strips as accessory



Divider system




Promotional shelves as accessory

Supermarket freezer with extra-large panorama glass lids

The SHALLOW range has an extra-large panorama glass lid and is built for standard freezer island setups. The units can be arranged back-to-back and with end freezers.

The large, angled panorama sliding lid allows full visibility for the products inside. The automatic defrosting function reduces maintenance costs, and prevents the formation of ice inside.

These are amongst the most efficient units on the market, with very low electricity consumption.

Design and Material		Measures and Content		Power and Consumption	
Number of lids	2	Temperature Range °C	-24 to -18	Energy Class	C
Lid No & Type	2 curved sliding temp. glass lids	Climate Class	3	Energy Arrow	
Basket No & Type		Gross / Net Weight kg	198 / 127	Energy Consumption kWh/24h	7,8
Dividers	Divider system	Gross / Net Volume l	1030 / 750	Annual Energy Consumption kWh/year	2847
Number of dividers pcs	2	Total Display Area m²	1,66	EEl	33
Feet / Legs	4 adjustable legs	Cooling and Functions		Input Power W	462
Exterior Finish	White	Type of Controller	Electronic	Voltage / Frequency V/Hz	220-240/50
Interior Finish	Powder coated steel	Type of Cooling	Static	Noise Level db(A)	48
Interior Light	LED	Type of Defrost	Automatic	Dimensions	
		Refrigerant	R290	Internal Dimension (WxDxH) mm	2364 x 774 x 490
		Refrigerant Charge g	2 x 80	External Dimension (WxDxH) mm	2500 x 920 x 790
		Thermometer	Yes	Packed Dimension (WxDxH) m	2610 x 1020 x 850
		GWP	3	40ft Container Load pcs	16