

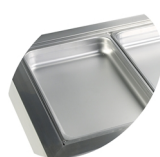
CW2/V

Cooling Well GN1/1



Product features

- Stainless steel
- Electronic thermostat
- Accepts GN1/1 pans (Not supplied)
- Ventilated cooling



Designed for GN1/1 pans, not supplied



Ventilated cooling

Design and Material		
Number of dividers	pcs	3
Exterior Finish		SS304
Interior Finish		SS304

Measures and Content		
Capacity GN Pans	pcs	2
Temperature Range	°C	+2 to +8
Climate Class		4
Gross / Net Weight	kg	46 / 38
Gross / Net Volume	l	107 / 64

Cooling and Functions		
Type of Controller		Electronic
Type of Cooling		Ventilated
Type of Defrost		Automatic
Refrigerant		R600a
Refrigerant Charge	g	70
Thermometer		Yes
GWP		3

Power and Consumption		
Energy Consumption	kWh/24h	366
Energy Consumption	kWh/h	0,14
Annual Energy Consumption	kWh/year	1336
Input Power	W	122
Voltage / Frequency	V/Hz	220-240/50
Noise Level	db(A)	42

Dimensions		
Build In Dimension (WxD)	mm	765 x 665
Internal Dimension (WxDxH)	mm	676 x 508 x 186
External Dimension (WxDxH)	mm	788 x 688 x 636
Packed Dimension (WxDxH)	mm	842 x 760 x 742
40ft Container Load	pcs	132