

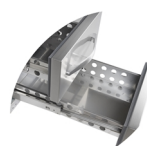
UC5240

Under Counter GN1/1



Product features

- Stainless steel
- Automatic defrost
- GN1/1 Drawers
- Adjustable legs
- Ventilated cooling



GN1/1 drawers




Strong castors as option

Design and Material	
Door No & Type	
Shelves No & Type	-
Shelf Dimensions	-
Drawers	4 GN1/1 drawers
Feet / Legs	4 adjustable legs
Exterior Finish	SS304
Interior Finish	SS304

Measures and Content		
Temperature Range	°C	+2 to +8
Climate Class		4
Gross / Net Weight	kg	95 / 82
Gross / Net Volume	l	180 / 170

Cooling and Functions		
Type of Controller		Electronic
Type of Cooling		Ventilated
Type of Defrost		Automatic
Refrigerant		R600a
Refrigerant Charge	g	85
Thermometer		Yes
GWP		3

Power and Consumption		
Energy Class		C
Energy Arrow		
Energy Consumption	kWh/24h	2,15
Annual Energy Consumption	kWh/year	785
EI	%	38,8
EI Vol	l	92
Input Power	W	300
Voltage / Frequency	V/Hz	220-240/50
Noise Level	db(A)	42

Dimensions		
Internal Dimension (WxDxH)	mm	902 x 530 x 389
External Dimension (WxDxH)	mm	1360 x 700 x 670
Packed Dimension (WxDxH)	mm	1405 x 750 x 720
40ft Container Load	pcs	72