

## IC200SC-SO

### Scoop Ice Cream Freezer

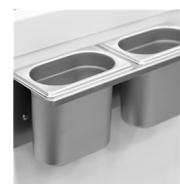


#### Product features

- Sneeze guard in curved glass
- Flat sliding lids with lock
- Storage under baskets
- Castors with brake
- Powder coated white steel inner liner
- Flat sliding glass lids with lock
- Optional - Scooping baskets for plastic tubs



Scooping basket option



Scoop wash option

### Scoop ice cream freezer with serveover

The IC-SO range is our price friendly basis chest freezer with a serve over glass top. It is a quality scoop ice cream freezer for a fair price. It is perfect if you wish to add scooping ice cream sales to your business and are on a budget.

This model is with flat sliding glass lids with a lock.


The model is still compact and comes in varies sizes, so that it is perfect for both smaller shops and delis with limited space as well as lager shops, gas stations and supermarkets.

It is on wheels and can easily change location in the shop.

It is ideal for branding for better presentation of the cabinet content.

All the different sizes of this range is optimized for baskets that can hold 5 liter plastic tubs in the top and there is room for storage underneath.

Baskets are optional. Type and number must be ordered under accessories.

Design and Material		Measures and Content		Power and Consumption	
SneezeGuard	Yes	Temperature Range °C	-24 to -14	Energy Class	E
Tempered glass	Yes	Climate Class	5	Energy Arrow	
Number of lids	2	Gross / Net Weight kg	92 / 84	Energy Consumption kWh/24h	1,85
Lid No & Type	2 flat sliding temp. glass lids	Gross / Net Volume l	191 / 165	Annual Energy Consumption kWh/year	675
Basket No & Type	Additional (see drawings)	<b>Cooling and Functions</b>		EI	51
Castors	4 wheels, 2 with brake	Type of Controller	Mechanical	EI Vol l	149
Exterior Finish	White	Type of Cooling	Static	Input Power W	98
Interior Finish	White painted steel	Type of Defrost	Manual	Voltage / Frequency V/Hz	220-240/50
Lock	Yes	Refrigerant	R600a	Noise Level db(A)	45
		Refrigerant Charge g	55	<b>Dimensions</b>	
		Thermometer	Yes		
		GWP	3		

Power and Consumption		
Internal Dimension (WxDxH)	mm	600 x 510 x 655
External Dimension (WxDxH)	mm	720 x 630 x 1250
Packed Dimension (WxDxH)	mm	800 x 750 x 1130
40ft Container Load	pcs	92